

CITY OF SUNSET VALLEY

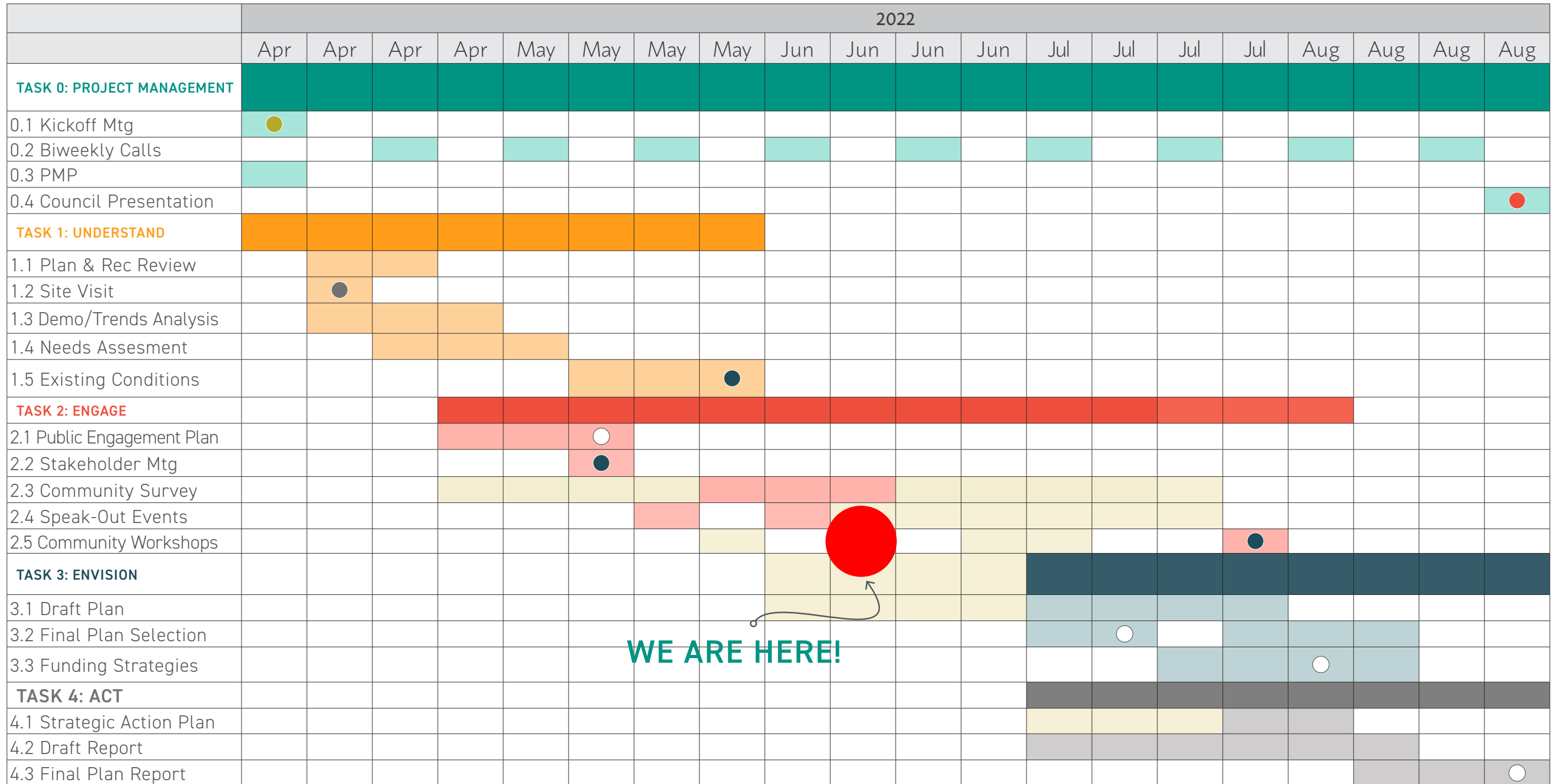
PARKS AND OPEN SPACE PLAN

PUBLIC WORKSHOP

WEDNESDAY, JUNE 15TH 6:00 PM



PROJECT TIMELINE



- Stakeholder Meeting
- Deliverables
- Kickoff Meeting
- Site Visit
- Speak-Out
- Final Presentation to City Council

WE ARE HERE!

PLAN ADOPTION

TEAM MEMBER INTRODUCTIONS

ASAKURA ROBINSON



Michelle Bright, SITES AP
Acting Principal-in-Charge



Kari Spiegelhalter
Project Manager



Anya Moucha, SITES AP
Deputy Project Manager



Cecley Hill
Planner

PROJECT OVERVIEW

OVERALL PROJECT GOAL

- Prepare a plan for the future of Parks, Conservation Areas, and Greenspace Areas in Sunset Valley.
- Work closely with the City of Sunset Valley and community members to create a plan that reflects the City's values and desires.

PROJECT OVERVIEW

TASK 1 : UNDERSTAND

The Understand Phase is an important part of analysis that will shape our knowledge of The City of Sunset Valley's existing

parks that are succeeding, the desires of community members, and how parks can enhance quality of life for Sunset Valley residents.

DELIVERABLES

- Existing Plans and recommendations findings summary report
- Demographic Trends Analysis Report
- Parks, Open Space, Facilities, Trail Assessment Inventories and Report
- Existing Conditions Report

PROJECT OVERVIEW

TASK 2 : ENGAGE

This task is an integral part of the assessment and envisioning process. A wide range of community/participation methods may be utilized alongside traditional public meetings.

DELIVERABLES

- 1 Public Engagement Plan
- 1 Public Survey in progress(Open Until 6/18)
- 2 Speak outs completed
- 1 Public Workshop (right now!)
- Upcoming Public Workshop

PROJECT OVERVIEW

TASK 3 : ENVISION

This task will build upon findings from previous tasks to develop a draft Parks and Open Space plan based on existing conditions, public engagement, and the information provided by City Staff, elected and appointed officials. We will evaluate current trends to inform potential programming.

DELIVERABLES

- Three (3) Draft Park and Open Space Plans
- Community Workshop #2
- 1 Ad Hoc Committee Presentation
- One (1) Final Park and Open Space Plan
- Opinion of Probable Costs & Operational Costs for the Preferred Parks & Open Space Plan
- Funding and Revenue Strategies Report

PROJECT OVERVIEW

TASK 4 : ACT

After research work, community engagement, and recommendations and conceptual plans are made, the team will begin to create the final plan document, which will include an action plan and schedule for shovel-in-the-ground projects.

DELIVERABLES

- Strategic Action Plan
- Draft Sunset Valley Parks and Open Space Plan Report
- Final Parks and Open Space Plan Plan Report

EXISTING CONDITIONS

CURRENT PARKS, OPEN SPACES, AND OPPORTUNITY AREAS

CURRENT PARKS + OPEN SPACES

- Gaines Greenbelt
- Upper Cougar Creek Greenbelt
- Lower Cougar Creek Greenbelt
- Indiangrass Prairie Preserve
- Sunset Valley Nature Area
- Valley Creek Park
- South Hills Conservation Area

OPPORTUNITY AREAS

- 1 City Hall Community Garden
- 2 The Uplands
- 3 Sunset Valley Elementary School
- 4 1 Sunset Trail
- 5 10 Sunset Trail
- 6 37 Lone Oak Trail
- 7 764 Oakdale Drive (Manly Tract)
- 8 6401 Brodie Lane
- 9 6107 Brodie Lane

Legend

-  Parks, Conservation Areas, and Greenspaces
-  City-owned Properties
-  Trails
-  Streams and Water
-  City Boundary



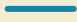

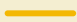
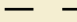





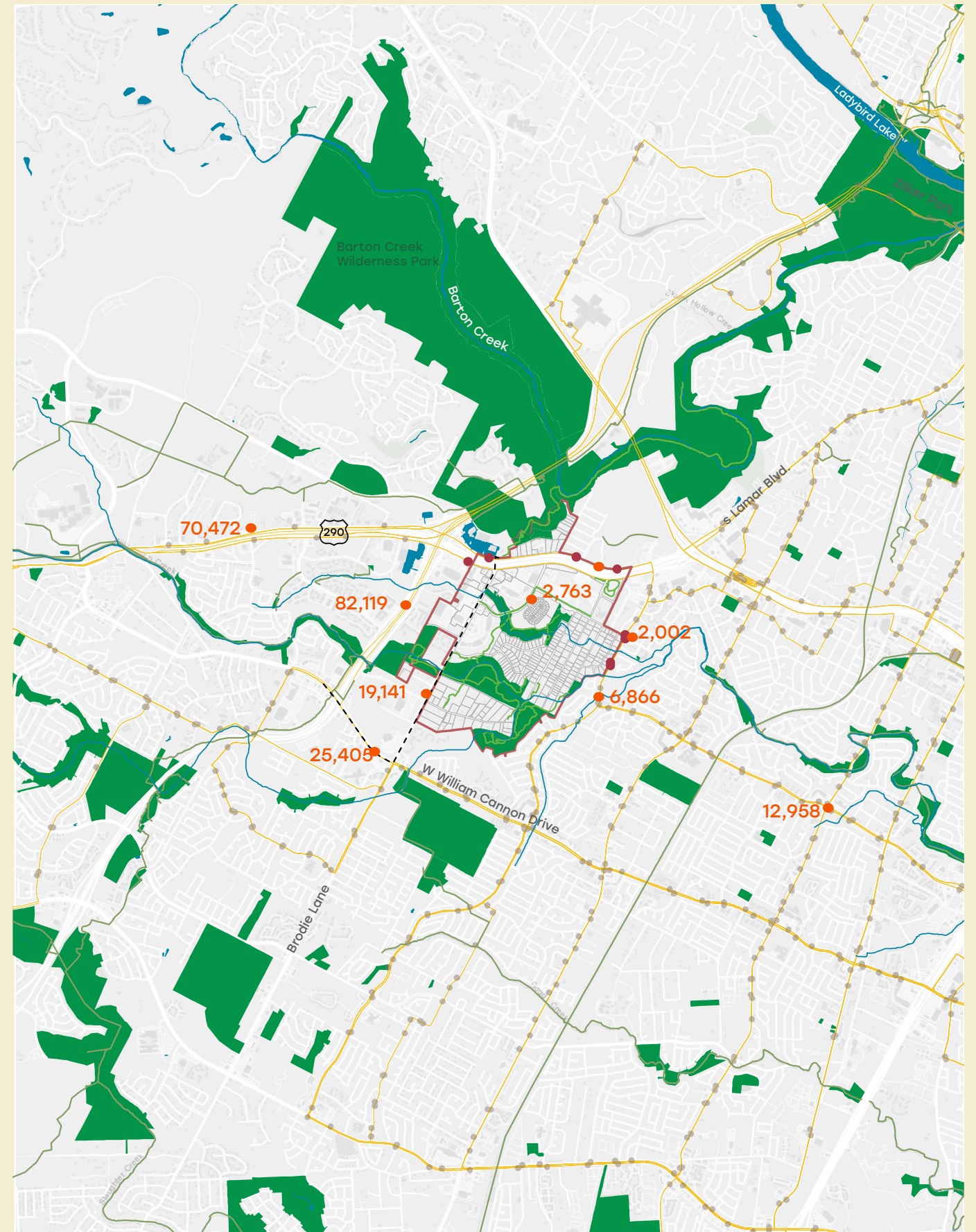
EXISTING CONDITIONS

CIRCULATION

The majority of traffic circulation is taking place on highway 290 and highway 1. These highways are a continuation of those going through Austin to the north and east.

Legend

-  Parks, Conservation Areas, and Greenspaces
-  Trails
-  Streams and Water
-  City Boundary
-  Public Transit Routes
-  Violet Crown Trail Expansion
-  Public Transit Stops
-  Public Transit Stops near Sunset Valley
-  Traffic Count



EXISTING CONDITIONS

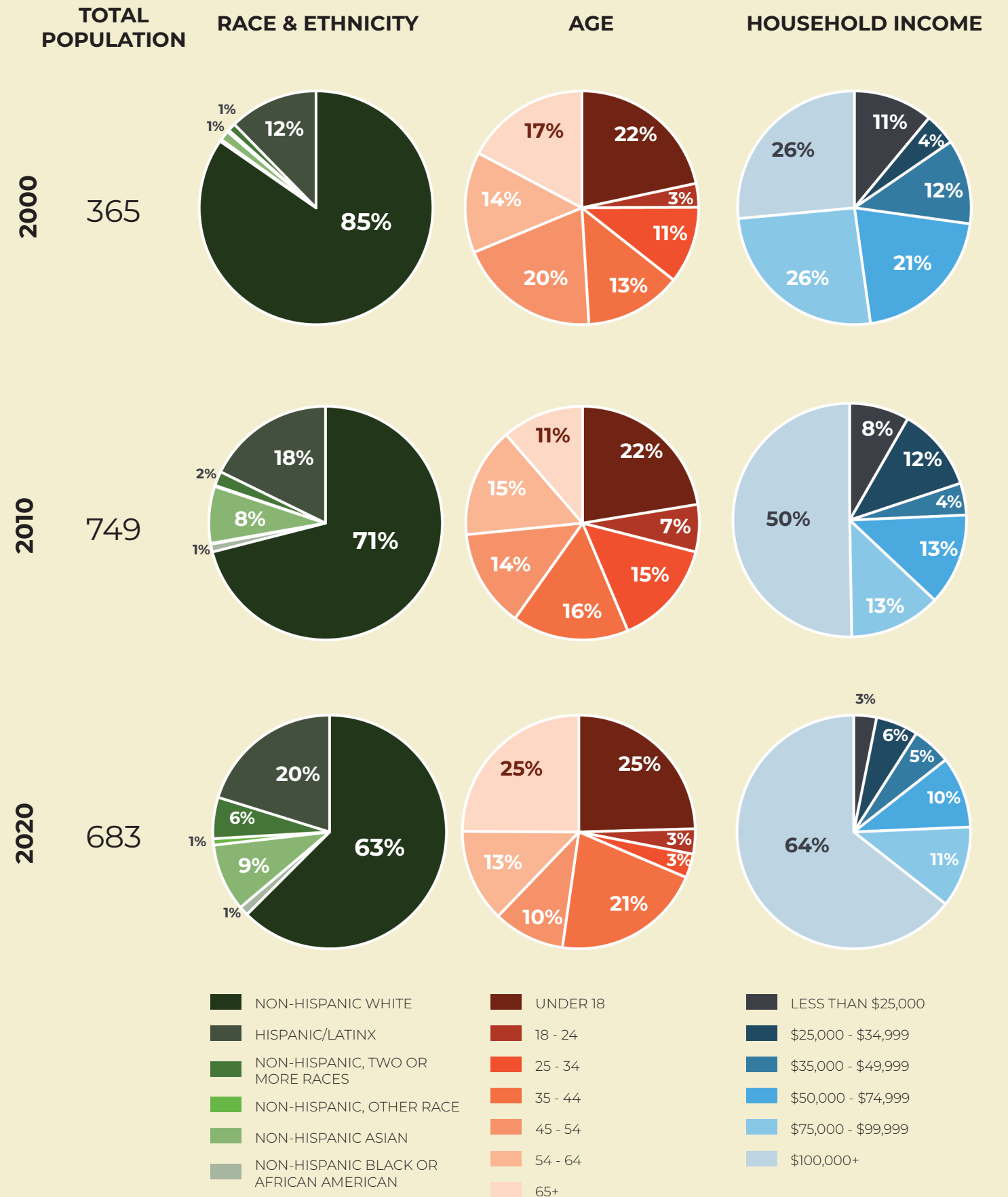
COMMUNITY

Demographics

In Sunset Valley/South Austin the number of non-hispanic whites has decreased.

The number of kids under the age of 18 is relatively stable, however, about 25% of Sunset Valley's population is 65+, compared to 11% in 2010.

Income has steadily increased.



EXISTING CONDITIONS

NATURAL RESOURCES

City-wide Hydrology

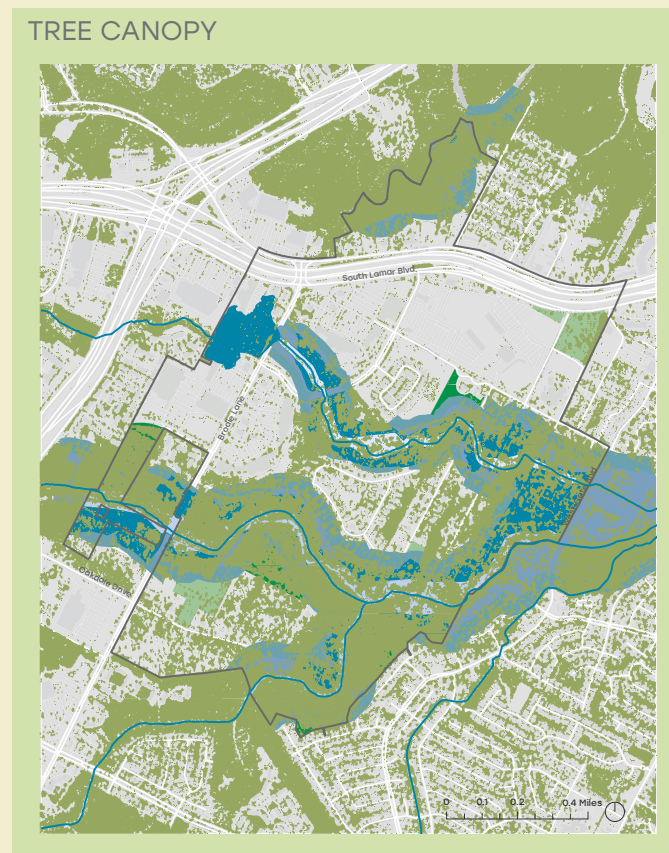
Williamson Creek is the most prominent waterway that flows through Sunset Valley.

City-wide Tree Canopy

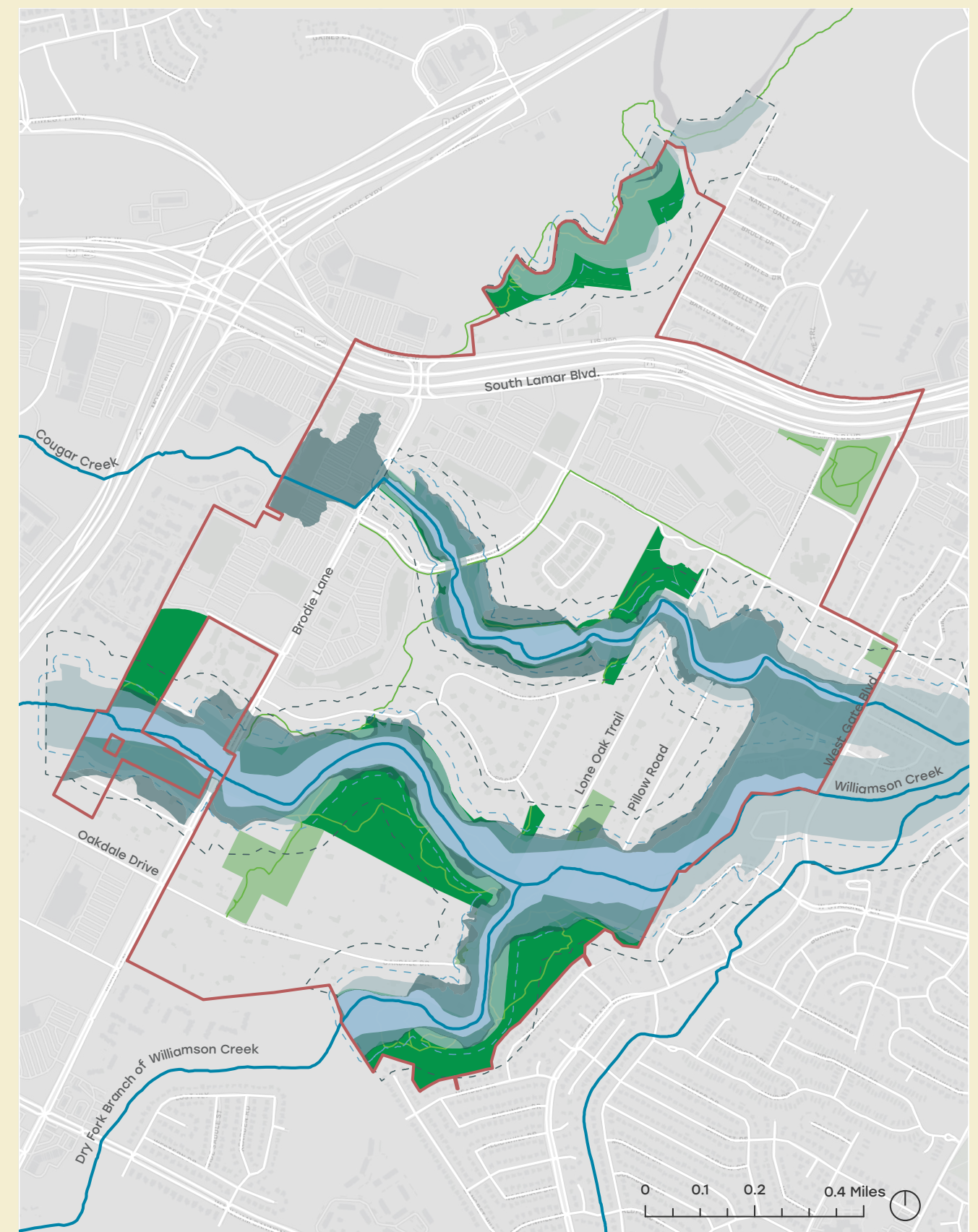
Sunset Valley has extensive tree canopy coverage, which provides shade over private properties, along City streets, and coverage over much of the City's trail systems.

Parks and Open Spaces

The geology, hydrology, and vegetation of Sunset Valley's parks and open spaces vary across the City.



- Parks, Conservation Areas, and Greenspaces
- City-owned Properties
- Trails
- Streams & Water
- City Boundary
- Existing Floodway
- 500 year Floodplain
- Critical Water Quality Zone
- 75 ft. Buffer to Critical Water Quality Zone
- Water Quality Transition Zone



EXISTING CONDITIONS

PARKS AND OPEN SPACE ASSESSMENTS

The Park Evaluation tool assessed the existing park areas based on seven criteria factors:

- 1: Park Access
- 2: Park Features
- 3: Supportive Facilities
- 4: Safety and Maintainence
- 5: Aesthetics
- 6: Health
- 7: Culture and Convience

The Evaluation Tool for Conservation Areas and Greenspaces is a similar tool but instead evaluates these sites on five criteria:

- 1: Access
- 2: Environmental Quality
- 3: Unique Natural Features
- 4: Safety and Serious Maintainence Concerns
- 5: Community

SOUTH HILLS CONSERVATION AREA Assessment Type: Conservation/Greenspace Area

Category	Averaged Score
Access	2.2
Environmental Quality	4
Unique Natural Features	2.5
Safety and Maintenance	3.58
Community	3.33



VALLEY CREEK PARK Assessment Type: Park

Category	Averaged Score
Park Access	2.36
Park Features	3
Supportive Facilities	2.5
Safety and Maintenance	4.46
Aesthetics	2.89
Health	2.44
Culture and Convenience	2



COMMUNITY ENGAGEMENT

SURVEYS AND SPEAK OUTS

SURVEY MONKEY PARKS SURVEY
RESPONDENTS: 185

SPEAK OUTS

NON-RESIDENT SURVEY

City of Sunset Valley Parks and Open Space Plan Survey

The City of Sunset Valley is committed to serving both residents and visitors to the City by improving its parks and recreation system. We are currently conducting a Parks and Open Space Master Plan. To learn more about this project, visit the project webpage. To carry out this goal, we would like your feedback on how we can improve the City's current parks and recreation systems.

This survey will take approximately 10-12 minutes to complete.

We thank you for taking the time to provide us your input, as your response is very important to us. Your participation in this survey is private and will only be used by the City of Sunset Valley. All identifying information will be removed from survey results.

We will also be hosting a public workshop on June 15th to learn from community members what they would like to see for the future of Sunset Valley's Parks and Open Spaces.

If you are interested in learning more about this project and participating in the public workshop, please complete this [google form](#) with your name and email address, and we will follow up with more information.

Let's get started!

GENERAL INFORMATION

* 1. Please provide your zip code

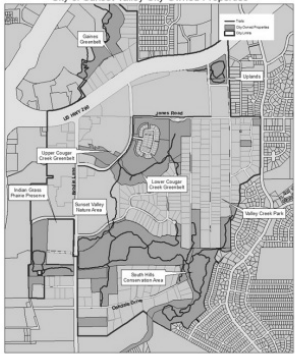
2. How many people are in your household:

Number of people	
17 and under	<input type="text"/>
18-24 years	<input type="text"/>
25-34 years	<input type="text"/>
35-44 years	<input type="text"/>
45-54 years	<input type="text"/>
55-64 years	<input type="text"/>
65-74 years	<input type="text"/>
75 years old or older	<input type="text"/>

HOW ARE YOU CURRENTLY USING SUNSET VALLEY'S PARKS AND OPEN SPACES

Below is a map of the Sunset Valley Parks and Open Spaces. Please reference this map for the following questions:

City of Sunset Valley City-Owned Properties



3. Do you currently use Sunset Valley's Parks and Open Spaces?

Yes
 No

4. Which three parks or trails do you visit most often (reference map)? If you do not know the name of the park, please provide the names of cross streets or describe the park's location in your own words.

Park or Open Space 1:

Park or Open Space 2:

Park or Open Space 3:

I do not visit these parks or open spaces:

5. Do you use parks and open spaces outside of Sunset Valley?

No
 Yes (please list parks or open spaces you visit in the box below)



DOC'S PLAYGROUND



PUBLIC WORKS OPEN HOUSE

PAGE 1: NON-RESIDENT SURVEY

PAGE 2

THE SURVEY IS STILL OPEN! GO TO: [HTTPS://TINYURL.COM/SUNSETPARKS](https://tinyurl.com/sunsetparks)

PROJECT TIMELINE

	2022																				
	Apr	Apr	Apr	Apr	May	May	May	May	Jun	Jun	Jun	Jun	Jul	Jul	Jul	Jul	Aug	Aug	Aug	Aug	
TASK 0: PROJECT MANAGEMENT																					
0.1 Kickoff Mtg	●																				
0.2 Biweekly Calls																					
0.3 PMP																					
0.4 Council Presentation																				●	
TASK 1: UNDERSTAND																					
1.1 Plan & Rec Review																					
1.2 Site Visit		●																			
1.3 Demo/Trends Analysis																					
1.4 Needs Assessment																					
1.5 Existing Conditions								●													
TASK 2: ENGAGE																					
2.1 Public Engagement Plan						○															
2.2 Stakeholder Mtg						●															
2.3 Community Survey																					
2.4 Speak-Out Events																					
2.5 Community Workshops																●					
TASK 3: ENVISION																					
3.1 Draft Plan																					
3.2 Final Plan Selection														○							
3.3 Funding Strategies																	○				
TASK 4: ACT																					
4.1 Strategic Action Plan																					
4.2 Draft Report																					
4.3 Final Plan Report																					○

- Stakeholder Meeting
- Deliverables
- Kickoff Meeting
- Site Visit
- Speak-Out
- Final Presentation to City Council



Q AND A

BREAK FOR ACTIVITIES