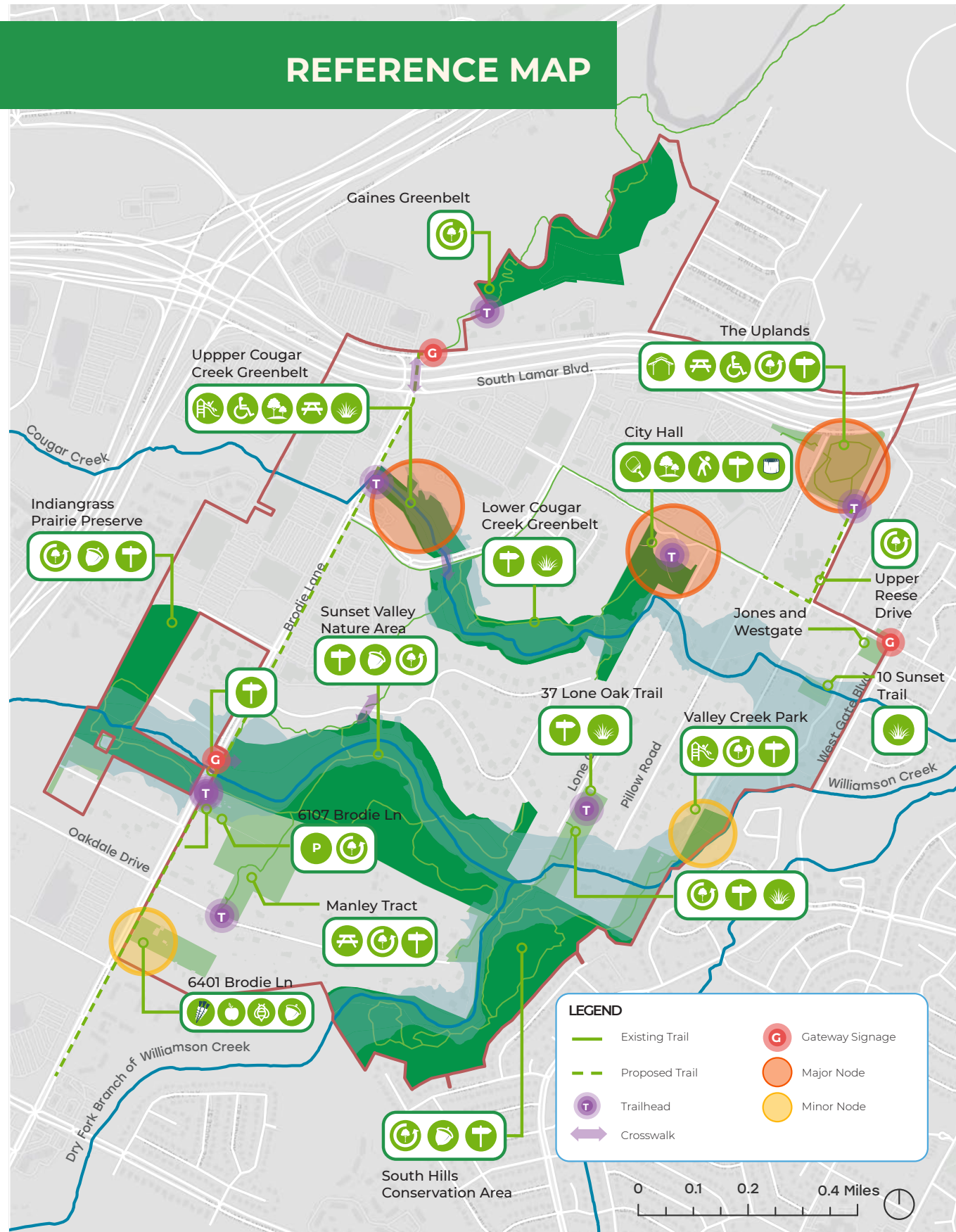


CITY OF SUNSET VALLEY
PARKS AND OPEN SPACE PLAN
AREA PLANS DRAFT



REFERENCE MAP



GAINES GREENBELT	4
THE UPLANDS	6
UPPER REESE DRIVE	8
CITY HALL	10
UPPER COUGAR CREEK	12
LOWER COUGAR CREEK	14
JONES AND WESTGATE	16
10 SUNSET TRAIL.....	18
VALLEY CREEK PARK	20
37 LONE OAK TRAIL.....	22
SUNSET VALLEY NATURE AREA.....	24
INDIANGRASS PRAIRIE PRESERVE	26
6107 BRODIE LANE.....	28
MANLY TRACT	30
6401 BRODIE LANE.....	32
SOUTH HILLS CONSERVATION AREA	34

TABLE OF CONTENTS

GAINES GREENBELT



Ecological Restoration in Central Texas. Source: SER Texas Chapter

THE UPLANDS



Possible farmers market pavillion.



Possible farmers market pavillion.



Shaded gathering areas.



Wayfinding signage.

UPPER REESE DRIVE



Tree planting. Source: Embark services.



Signage helps protect sensitive areas during restoration efforts.



Pickleball Court. Source: AJC



Nature Play. Source: Earthscapeplay



Tree planting for shade.



Trailhead signage.

UPPER COUGAR CREEK



Destination playground. Source: Do512



Floodplain restoration helps support a healthy ecosystem.



Shaded gathering areas.



ADA Accessible path. Source: Seattle Times

LOWER COUGAR CREEK



Example trailhead kiosk. Source: Hiking Project



Example wayfinding signage. Source: Heine Jones

JONES AND WESTGATE



Example of possible gateway signage. Source: Phil Hardberger Park, City of San Antonio.



Public Art



Tree planting. Source: Texan by Nature

10 SUNSET TRAIL



Floodplain restoration helps support a healthy ecosystem.

VALLEY CREEK PARK



Playground for younger children. Source: City of Belmont, Australia



Wayfinding signage.



Shaded gathering areas.

37 LONE OAK TRAIL

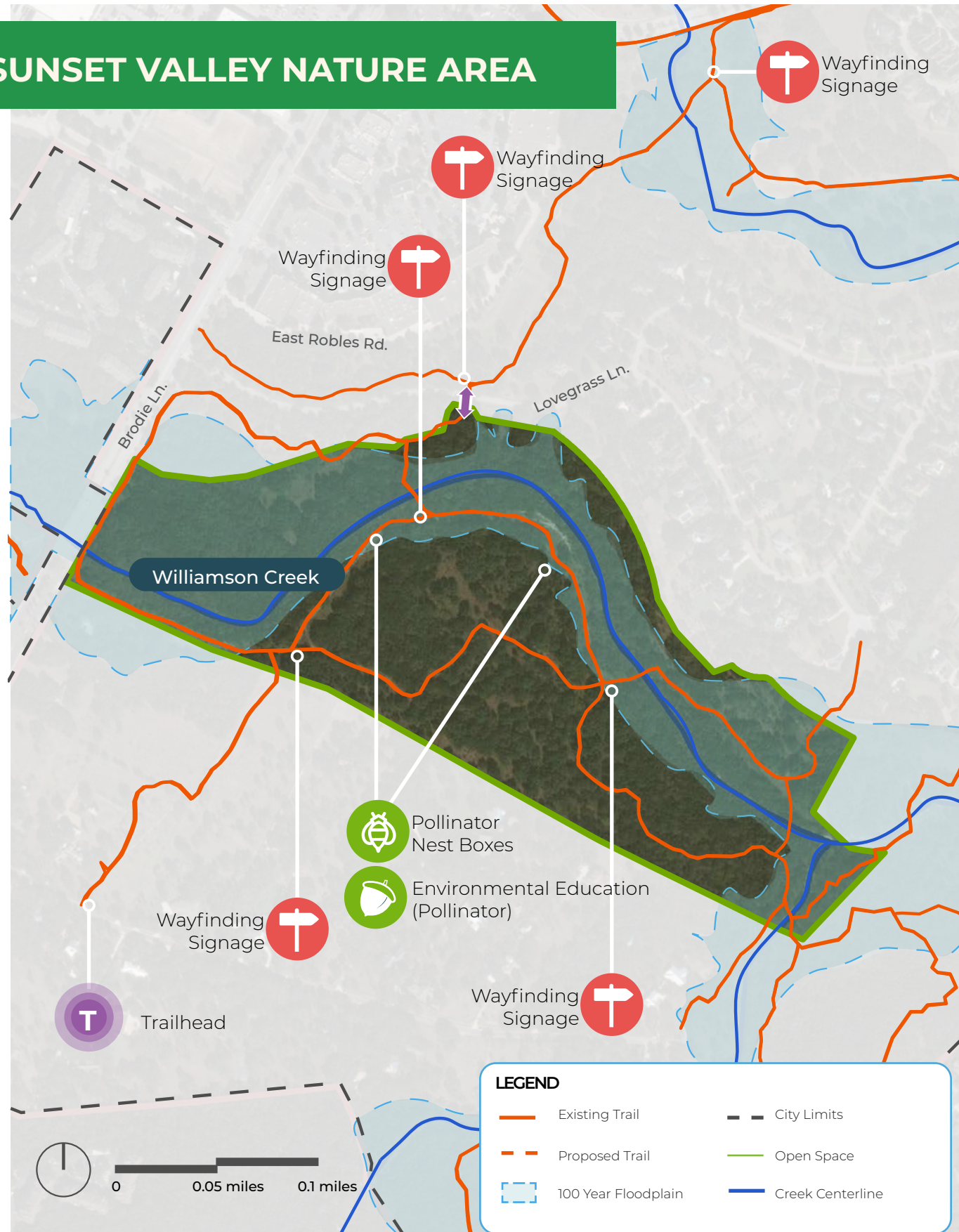


Possible trailhead kiosk. Source: Onlyinyourstate



Prairie Restoration. Source: Austin Parks Foundation

SUNSET VALLEY NATURE AREA



Wayfinding signage.



Signage helps protect sensitive areas during restoration efforts.



Example of possible trailhead signage.



Environmental education signage.

INDIANGRASS PRAIRIE PRESERVE



Environmental education.



Pollinator nesting boxes and environmental education.



Interactive environmental education.

6107 BRODIE LANE



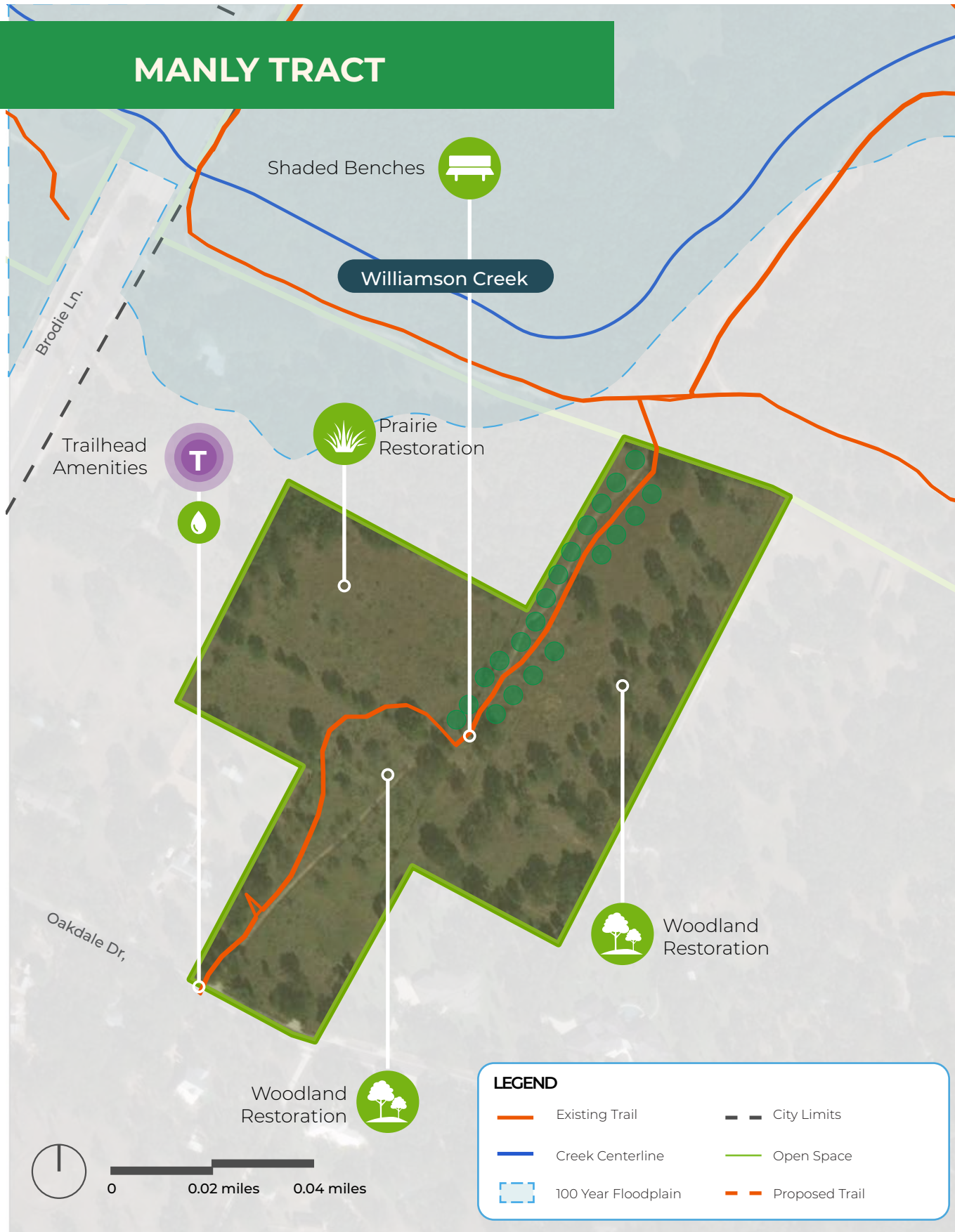
Example trailhead kiosk.



Integrate parking with green infrastructure.
Source: Meador Library



Restore and maintain existing ecology.

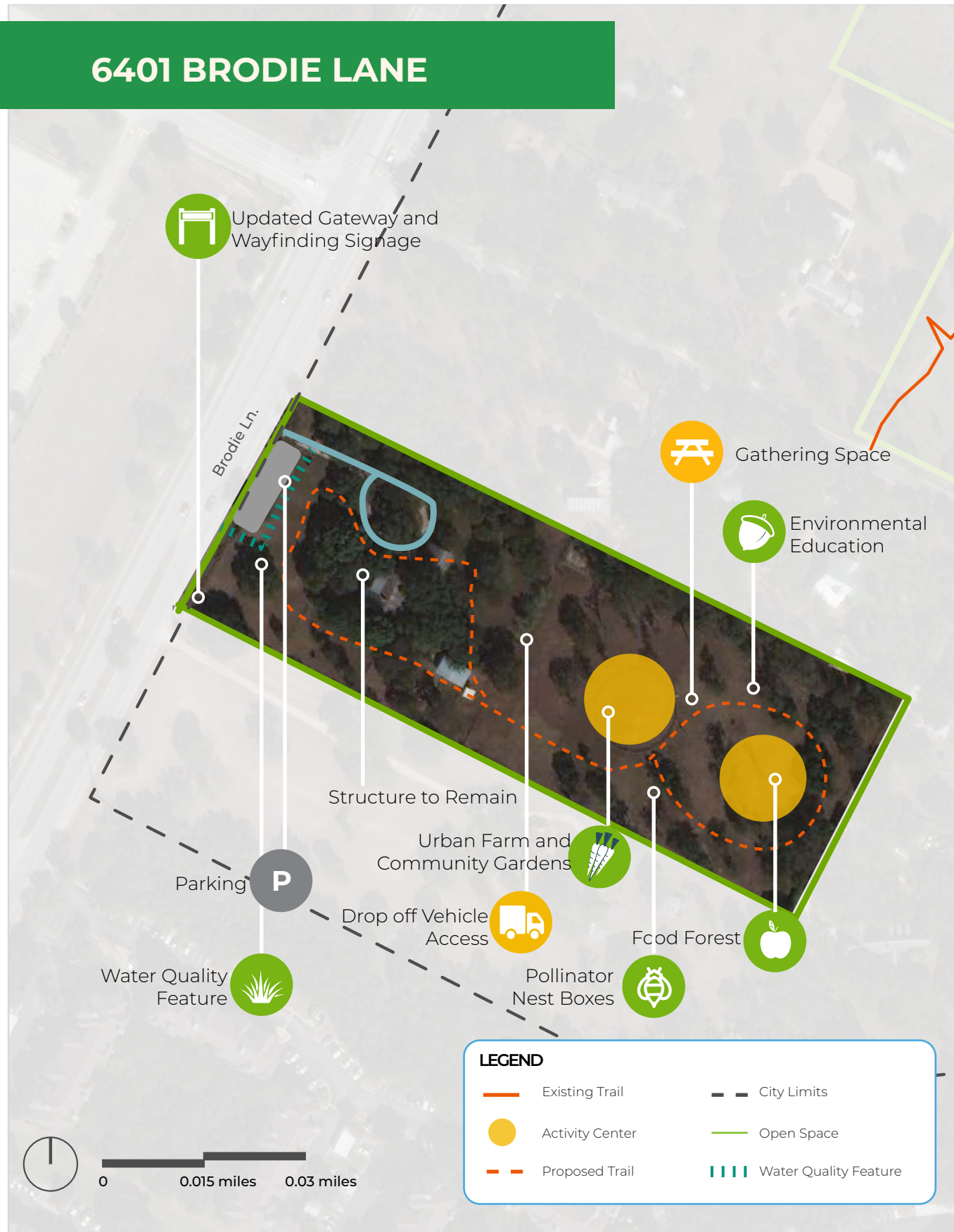


Fountains can accommodate ADA accessibility needs and pets. Source: St. Croix Recreation



Shade over small group gathering spaces. Source: McKinney Falls State Park

6401 BRODIE LANE



Food forest. Source: The Gardening Channel



Community Garden Plots.

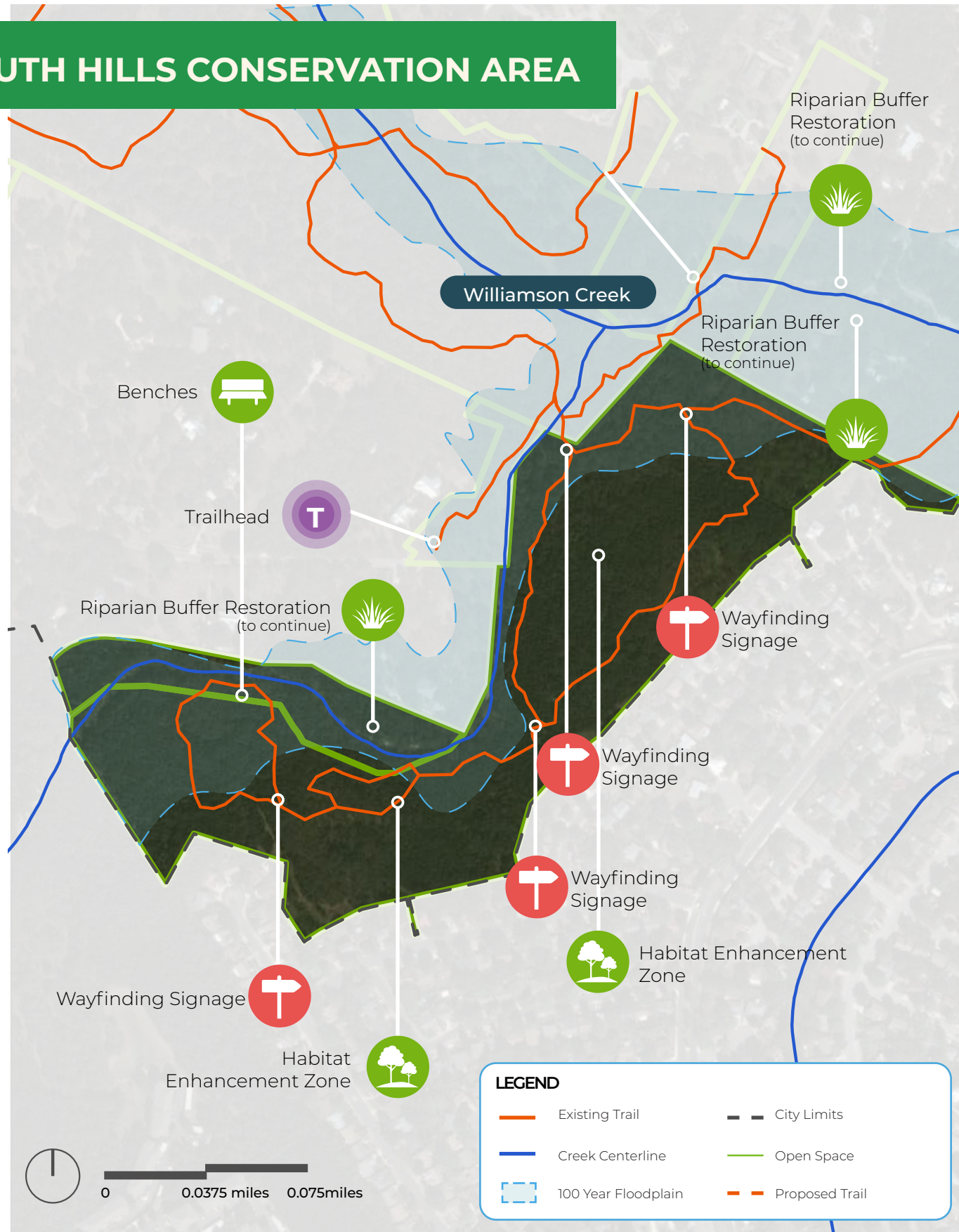


Pollinator nesting boxes. Source: Carol Jelich

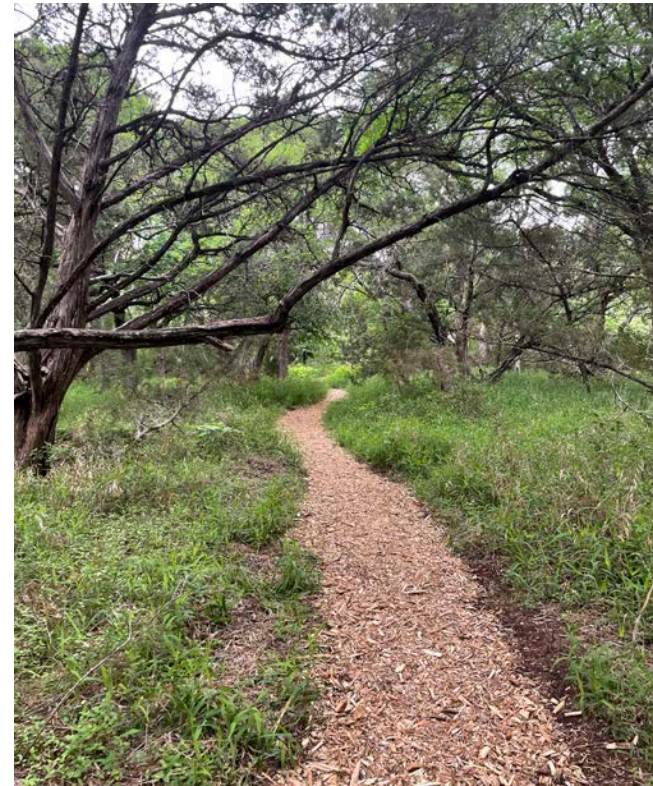


Interactive environmental education. Source: Playgroundaroundthecorner

SOUTH HILLS CONSERVATION AREA



Environmental education signage.



Restore and maintain existing ecology and trails.



Trail wayfinding signage.