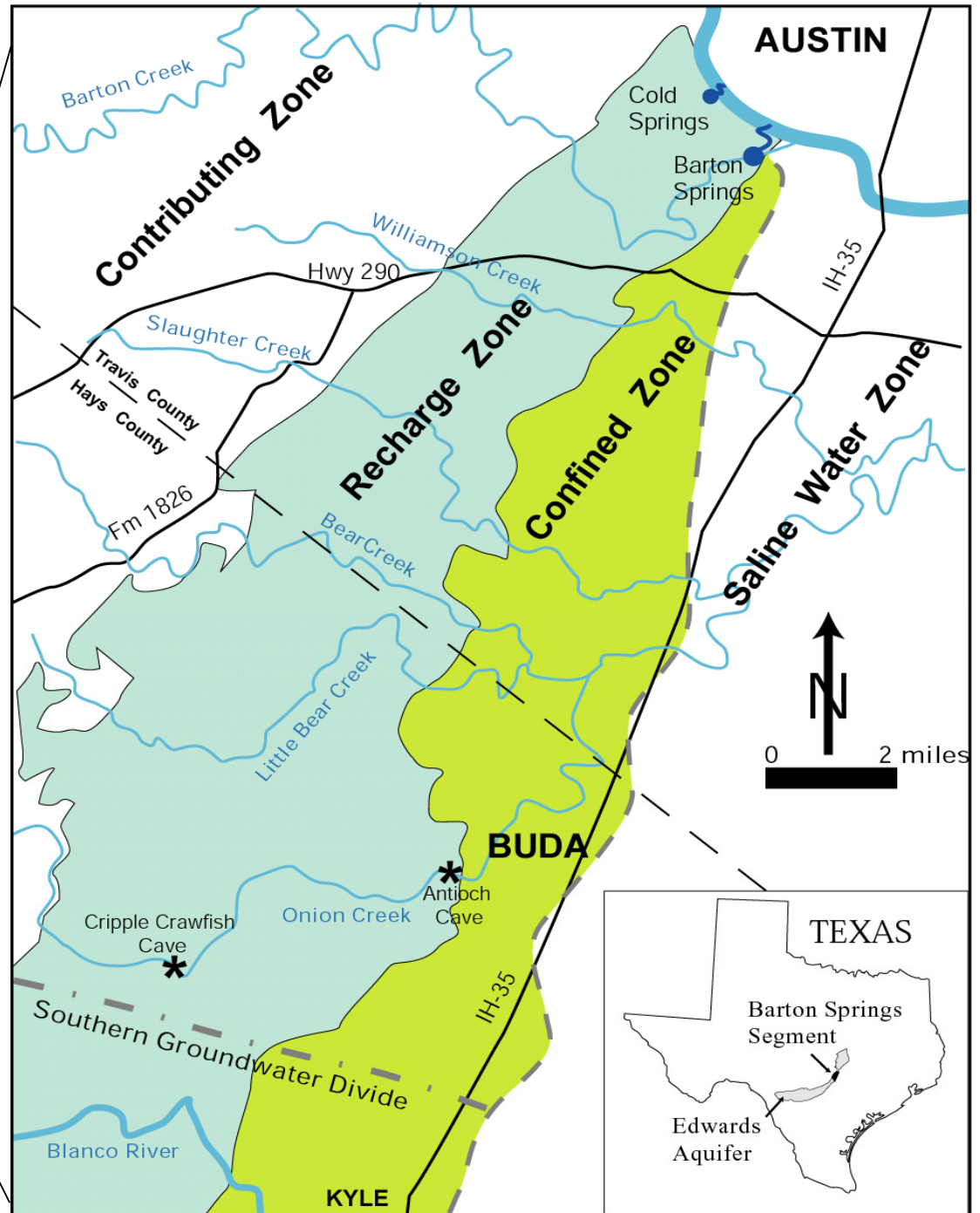
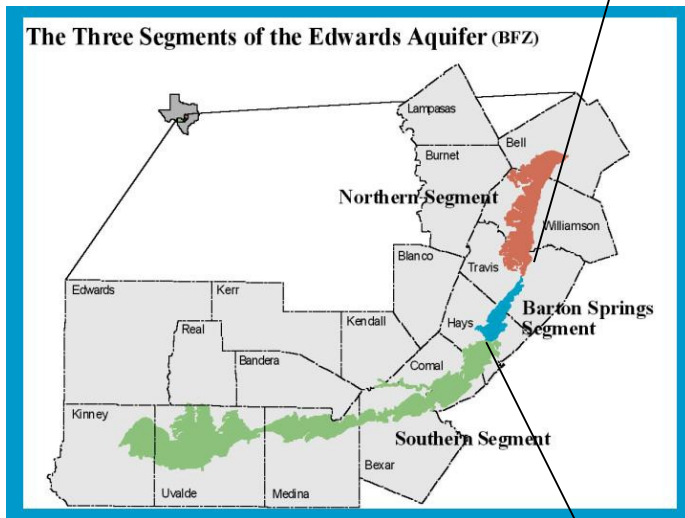
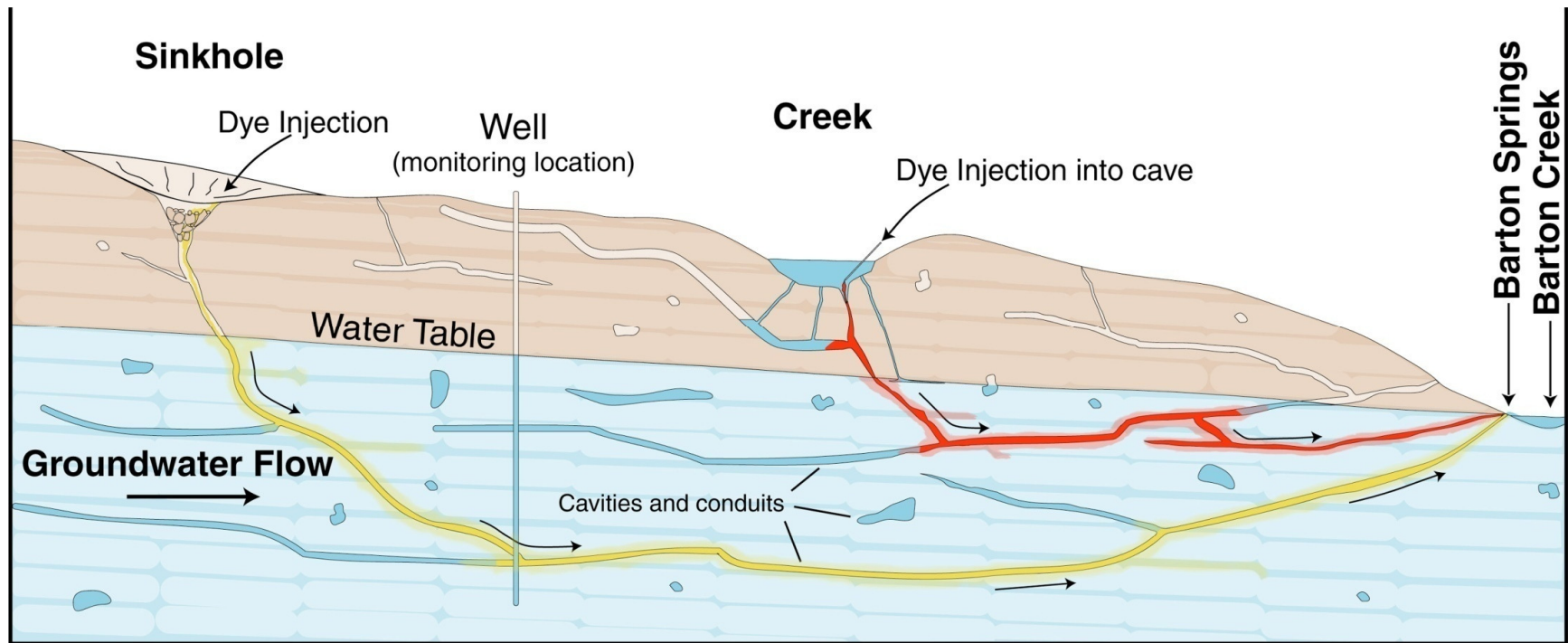


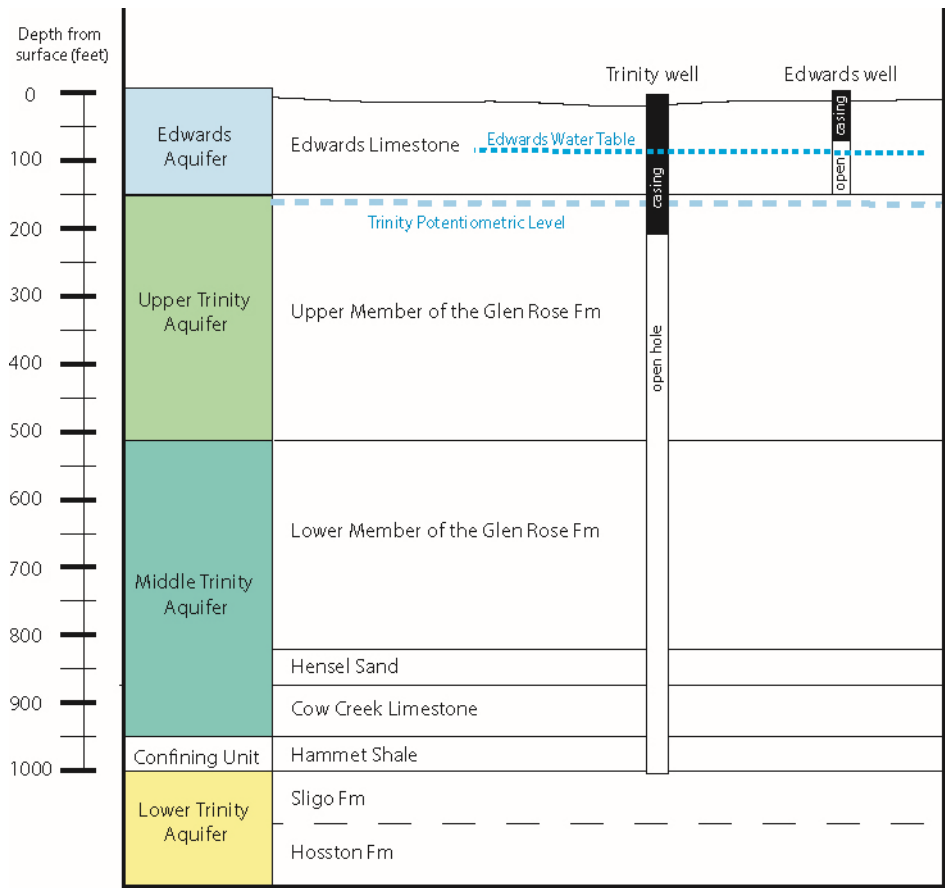
Barton Springs Segment of the Edwards Aquifer



Dye-Trace Studies

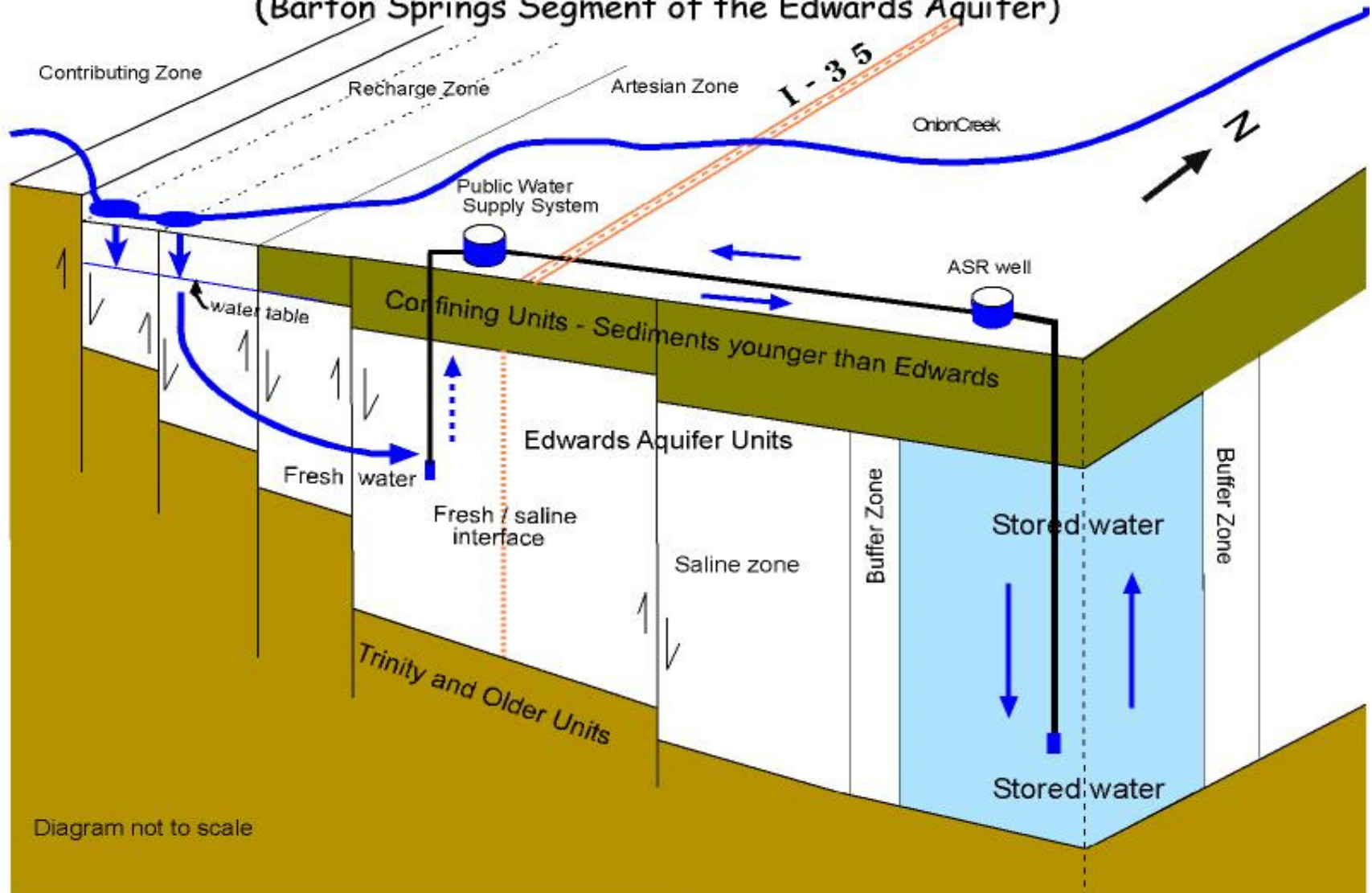


Schematic Cross Section of
the Barton Springs Aquifer

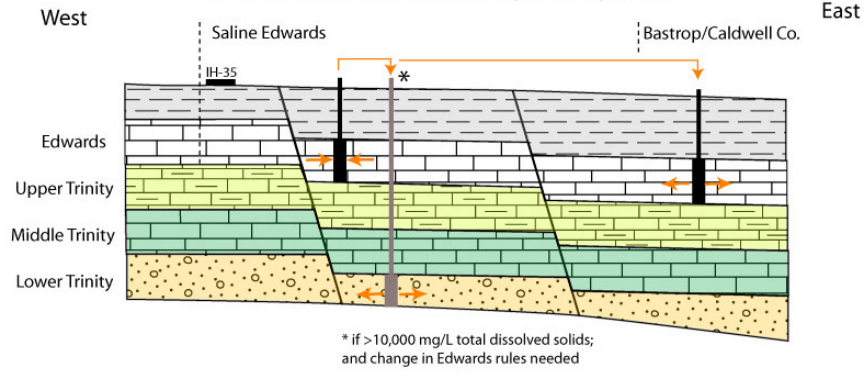


V.E. = ~1x

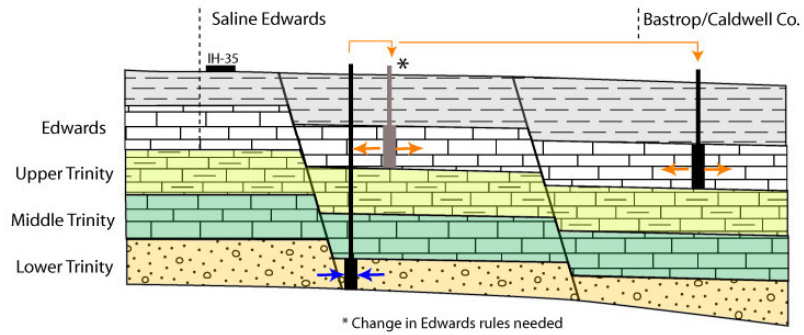
Schematic Diagram of Aquifer Storage and Recovery (ASR) System (Barton Springs Segment of the Edwards Aquifer)



A- Desal: Edwards with disposal options



B- Desal: Lower Trinity with disposal options



C- ASR: Fresh Edwards to Brackish Edwards Zone

